

ESD Annexation Briefing



The Process

-Petition

-Public Hearing (Aug. 17th)

-Election (Nov. 8th)



Petition

PETITION REQUESTING INCLUSION IN PARKER COUNTY EMERGENCY SERVICES DISTRICT NO. 1

STATE OF TEXAS

COUNTY OF PARKER

TO THE HONORABLE BOARD OF PARKER COUNTY EMERGENCY SERVICES DISTRICT NO. 1 **BY:**.....

RECEIVED
JUN 29 2022

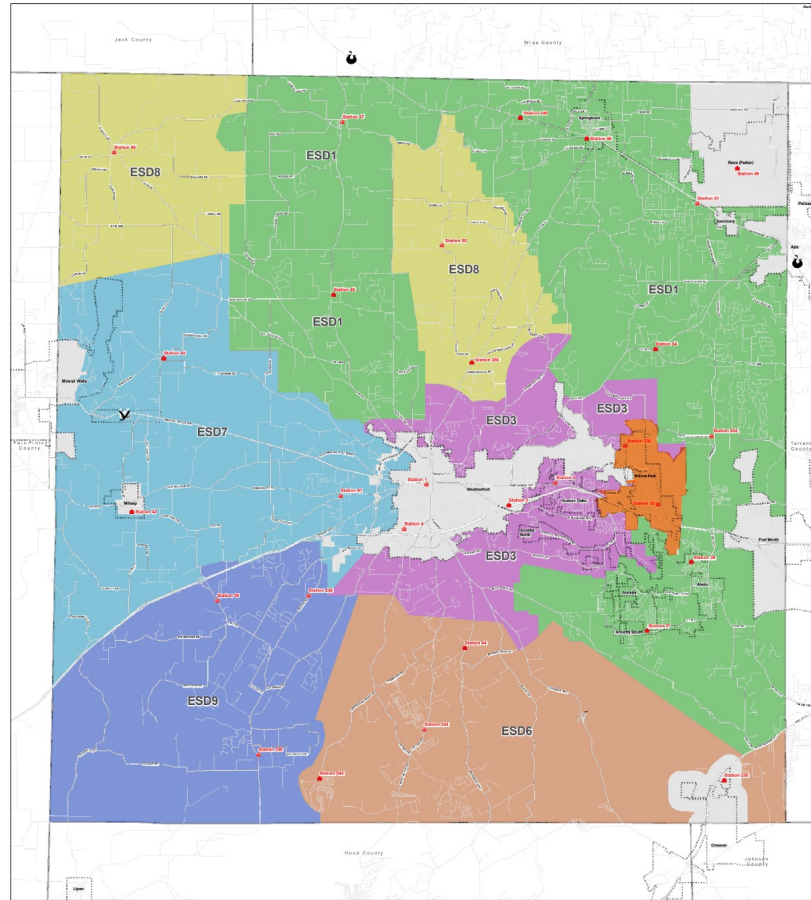
WE, THE UNDERSIGNED, BEING NOT LESS THAN FIFTY (50) OF THE QUALIFIED VOTERS WITHIN THE AREA ATTACHED AS EXHIBIT "A" (HEREINAFTER REFERRED TO AS "Petitioners," PURSUANT TO THE PROVISION OF CHAPTER 775, TEXAS HEALTH AND SAFETY CODE), HEREBY RESPECTFULLY PRESENT AND FILE THIS PETITION REQUESTING THE INCLUSION OF THE AREA ATTACHED AS EXHIBIT "A" INTO PARKER COUNTY EMERGENCY SERVICES DISTRICT NO. 1

WHEREFORE THE PETITIONERS RESPECTFULLY PRAY THAT THIS PETITION BE FOUND IN PROPER FORM, THAT THE BOARD SET THE PLACE, DAY, AND HOUR WHERE IT WILL CONSIDER SAID PETITION, THAT UPON SUCH HEARING THIS PETITION BE GRANTED, AND UPON THE GRANTING OF SAID PETITION, THAT AN ELECTION BE CALLED BY THE BOARD TO AUTHORIZE THE INCLUSION OF THE AREA AS DEFINED IN EXHIBIT "A", INCLUDING IN FULL, PROPERTIES WITHIN THE CORPORATE BOUNDARIES OF THE CITY OF WILLOW PARK, AND ALL AREAS OF WILLOW PARK EXTRA TERRITORIAL JURISDICTION NOT CURRENTLY IN AN EMERGENCY SERVICES DISTRICT.



Exhibit

EXHIBIT A



MAP SYMBOLLOGY

- | | | |
|------|-----------|-------------------|
| ESD1 | ESD8 | Fire Houses |
| ESD3 | ESD9 | Major Road |
| ESD6 | NESD | Minor Road |
| ESD7 | Exhibit A | City Boundaries |
| | | County Boundaries |



Parker County ESD Boundaries

Annexation Petition
Exhibit A



Public Hearing

**Notice of Public Hearing
And
Special Meeting of
Parker County Emergency Services District NO. 1**

In compliance with chapter 551 of the Texas Government Code, Parker County Emergency Services District No. 1 will hold a Public Hearing and Special Meeting on the Petition for Inclusion of a Defined Territory in Parker County, commonly known as the Willow Park Fire Service Area, including in full, properties within the corporate boundaries of the City of Willow Park, and all areas of the Willow Park Extra Territorial Jurisdiction not currently in an emergency services district, per the petition filed with the District on June 29th, 2022. The public is invited to speak.

**The Public Hearing and Special Meeting will be held on
August 17, 2022 at 6:00 p.m.
At
SpringHill Suites Willow Park
500 Shops Blvd / Willow Park, Texas 76087**



Election

- November 8th
- Proposition To Join
- Proposition Regarding Debt
- Proposition Within Existing District to Accept



What Is An ESD?

- Political Subdivision of the State
- Governed Under Chapter 775,
Texas Health & Safety Code
- Regional & Suburban Solution
for Funding Public Safety
- Over 300 ESD's In Texas



How Are ESD's Funded?

- Sales Tax -1.5% In Un-Incorporated Areas
- Ad-Valorem Tax – Up To .10 / 100 (Constitutional Cap)
- Maintenance/Ops & Interest/Sinking All Within .10 Rate



Representation

- Chapter 775.034, Texas Health & Safety Code
- Appointed By County Commissioners Court
- 5 Member Board/2 Year Terms
- Qualified By: -State Citizen -Voter -Property Owner
& Public Safety Knowledge/Experience



Why An ESD?

-Sustainable Funding For Emergency Services

-Sole Purpose Funding

-Not Subject to TIRZ

-Economy of Scale

-Efficiency of Regional Operations & Funding



Current Response Vs. Funding

-Response Is Regional, Funding Is Not

Total Calls	982
Mutual/Auto Aid Given	165
Mutual/Auto Aid Percentage	17%

-Training, Equipment, & Response Can Be Further Streamlined



Transition of Services

-Personnel

-Equipment

-Facilities

-Funding



Transition of Services - Personnel

- Retain the 9 Willow Park Firefighters
- Retain positions & service time
- Better pay & benefits



Transition of Services - Equipment

-Fleet

-Equipment

-PPE

-Communications



Transition of Services - Facilities

-Fire Station Will Remain
In Willow Park



Transition of Services - Funding

-Fiscal Transition

-Maintenance & Operations

-Interest & Sinking

-Net Tax Cut



Who Is ESD 1?

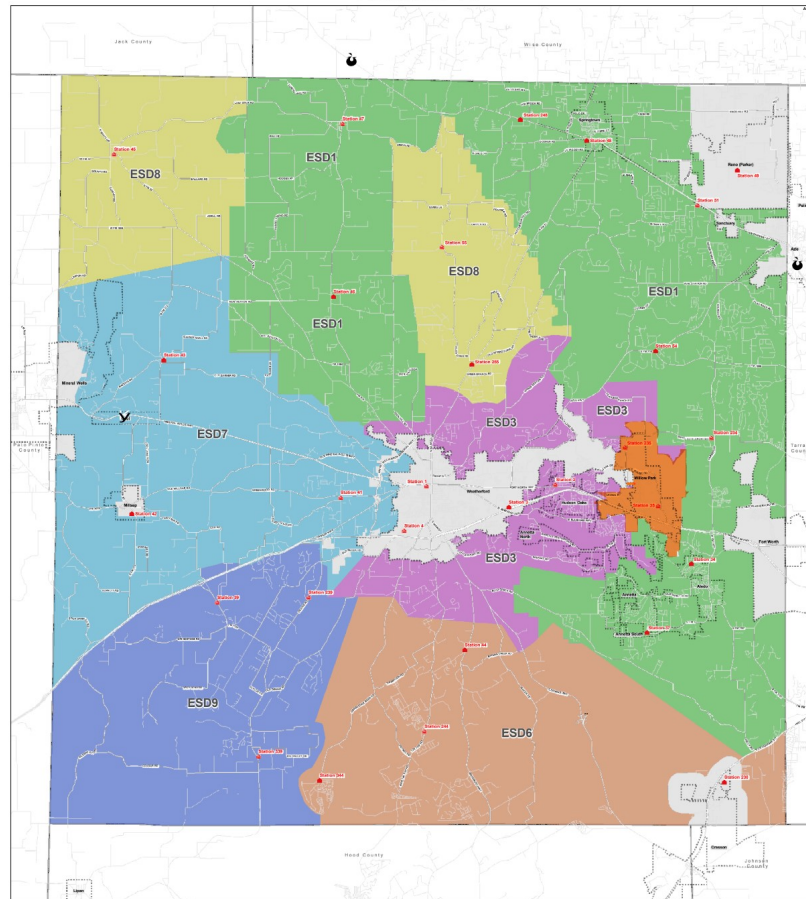
PROUDLY SERVING:

- ALEDO
- THE ANNETTA'S
- SPRINGTOWN
- PEASTER
- POOLVILLE
- MORNINGSTAR
- SILVER CREEK
- LAJUNTA



Parker County ESD Map

EXHIBIT A



MAP SYMBOLGY

- | | | |
|------|------------|-------------------|
| ESD1 | ESD8 | Fire Houses |
| ESD3 | ESD9 | Major Road |
| ESD6 | Minor Road | City Boundaries |
| ESD7 | Exhibit A | County Boundaries |



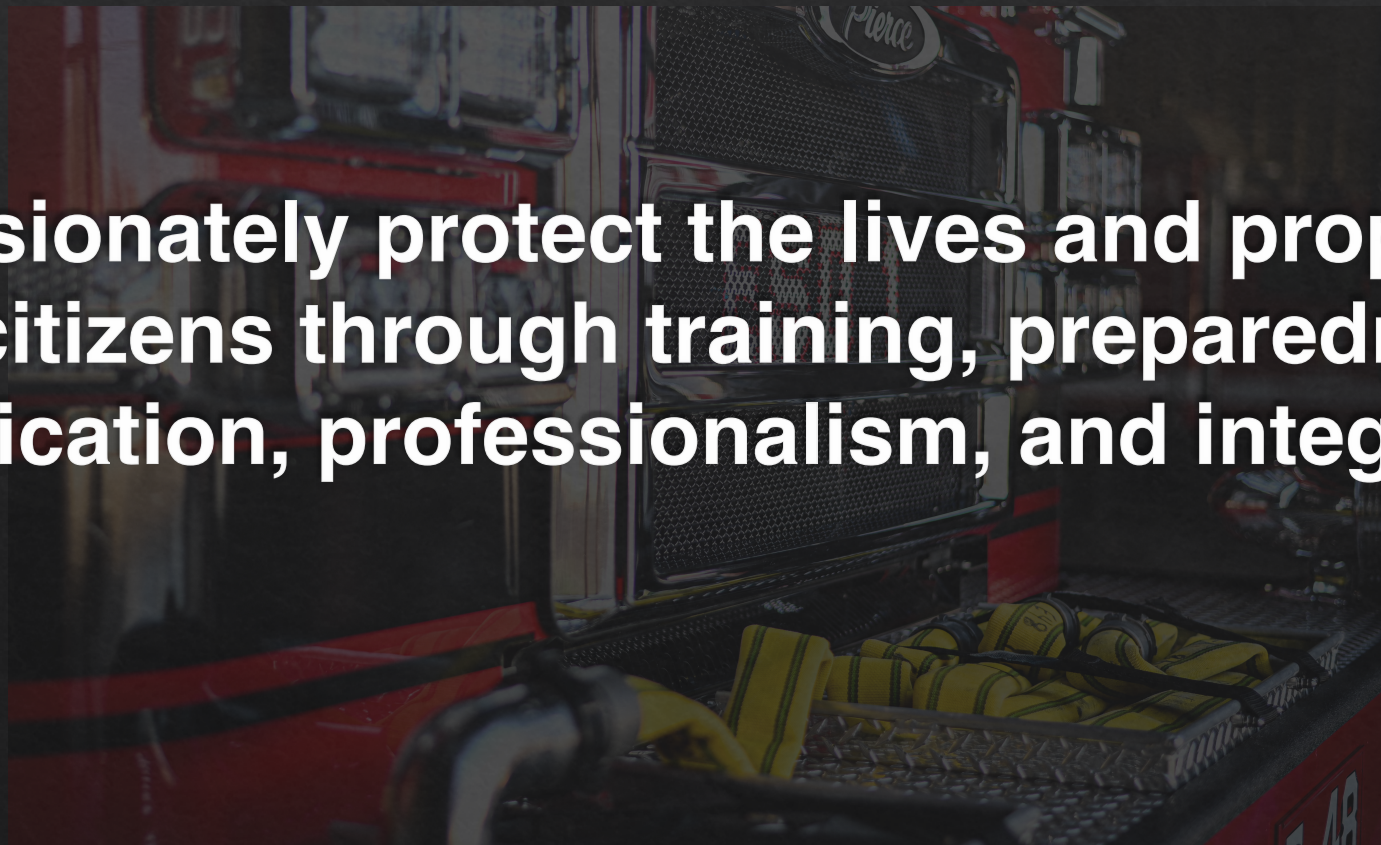
Parker County ESD Boundaries

Annexation Petition
Exhibit A



MISSION STATEMENT

To passionately protect the lives and property of our citizens through training, preparedness, dedication, professionalism, and integrity.



PARKER COUNTY ESD No. 1



- Centrally Administrated
- 311 Square Miles, 70,000 Residents
- 9 Stations, 38 Apparatus
- 65 Full Time Staff
- 40 Part Time & Reserve Staff

- 6,000 + Incidents Annually
- 5 Incorporated Municipalities
- 4 Annexations Since 2011
- Staff 7 Response Companies
- 23 Firefighters On Duty/Shift



Operations Division



Communications Division



Fleet Services Division



Training Division

- Full Time Training Staff
- Farmer Rd. Training Facility



Training Center

